

College MANOR

FOR LEASING INQUIRIES
PLEASE CALL, EMAIL, OR VISIT OUR WEBSITE



BUILDING INFO:

Modern four (4) level elevator serviced apartment block.

Adult (18+) occupancy.

27 Suites: 18 - 2 Bedroom and 9 - 1 Bedroom suites including 2-barrier free suites and 6 - affordable one (1) bedroom suites plus 1 - affordable two (2) bedroom suites.

Secure main entrances with intercom entry system

Common area (main floor) barrier free accessible public washroom, fitness room, lounge area, bike storage, dog wash located on main floor available for tenant use.

1-designated handicap parking stall, 1-designated loading zone stall

Electrified outdoor parking stall available for an additional fee

Non-smoking building

Pet friendly building

On-site Resident Manager

SUITE FEATURES:

9-foot ceilings

Full stainless steel appliance package:

stove, microwave, range hood, dishwasher and double basin stainless steel sink

In-suite laundry: washer & dryer

Kitchen Island

Soft close shaker style cabinetry & quartz countertops

Suites painted neutral colour throughout white trim, baseboards & doors

4-piece bathroom: toilet, sink, tub + shower

Luxury vinyl tile throughout unit, neutral tones

Private balcony

Separate heating and cooling system

Tenant responsible for payment of gas & electricity

Water included in rental payment

TERMS:

Security / Damage Deposit - Equal to one (1) months rent. Half (1/2) payable on possession date of suite, remaining (1/2) due within (60) days of possession date of suite.

PROFESSIONALLY MANAGED BY:



ADAM NIESNER REALTY (1991) LTD.

(306)569-1424

LEASING@COLLEGEMANORLIVING.CA

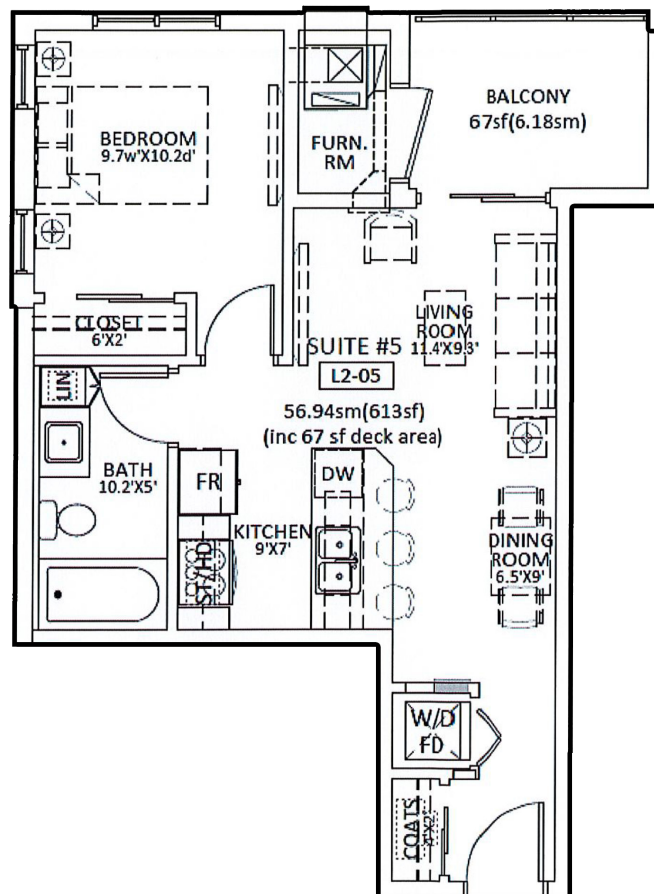
WWW.COLLEGEMANORLIVING.CA

1 BEDROOM + 1 BATH

UNIT SIZE: 613 SQ. FT.

Northwest corner units - 2nd, 3rd & 4th floors
Suites: #205*, #305*, #405*

*Affordable unit



Layout should be used for reference only. Some details may not be exact. Floor plans may be a mirror image.

PROFESSIONALLY MANAGED BY:



ADAM NIESNER REALTY (1991) LTD.

(306)569-1424

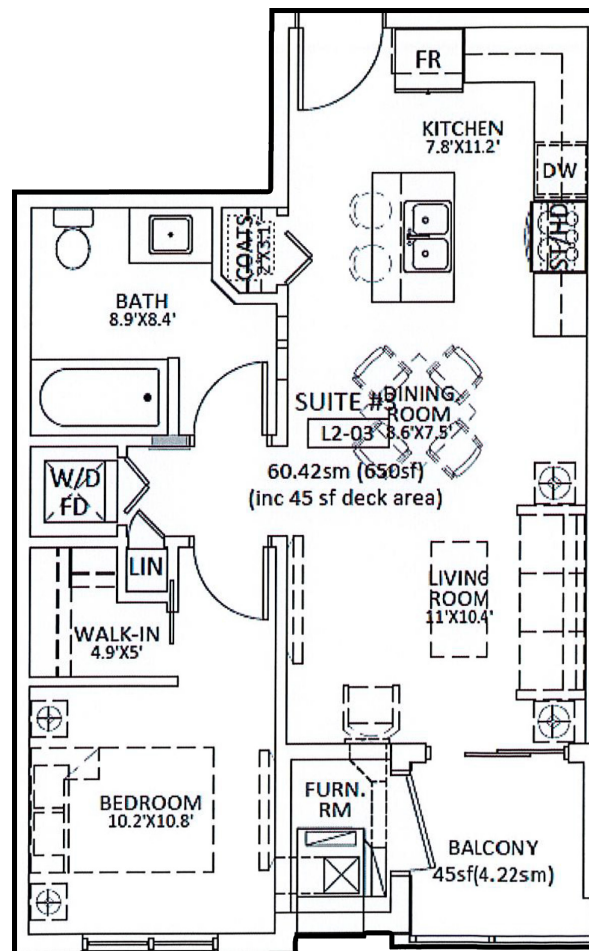
LEASING@COLLEGEMANORLIVING.CA

WWW.COLLEGEMANORLIVING.CA

1 BEDROOM + 1 BATH UNIT SIZE: 650 SQ. FT.

South facing units - 2nd, 3rd & 4th floors
Suites: #203*, #303*, #403*

*Affordable units



Layout should be used for reference only. Some details may not be exact. Floor plans may be a mirror image.

PROFESSIONALLY MANAGED BY:



ADAM NIESNER REALTY (1991) LTD.

(306)569-1424

LEASING@COLLEGEMANORLIVING.CA

WWW.COLLEGEMANORLIVING.CA

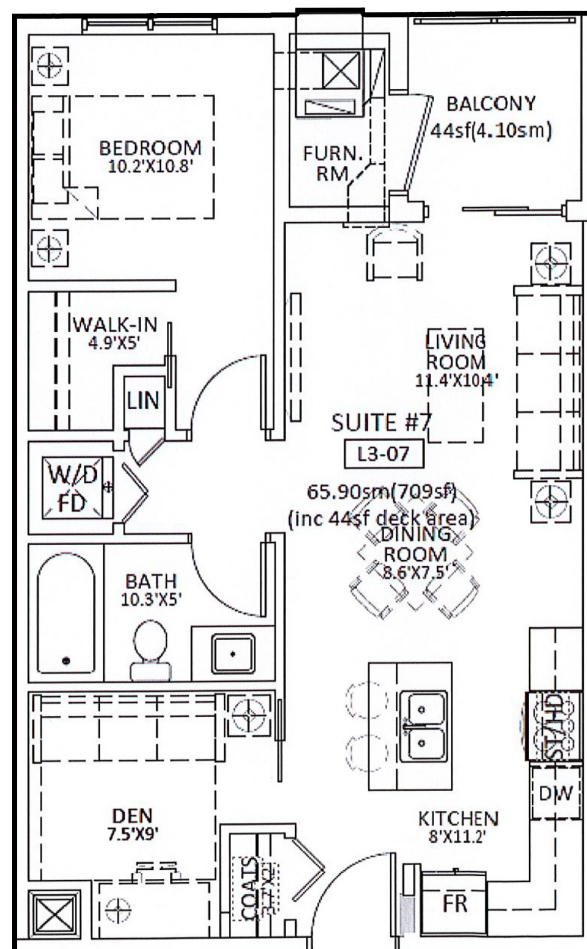
1 BEDROOM + DEN + 1 BATH UNIT SIZE: 709 SQ. FT.

North facing units - 2nd, 3rd & 4th floors

Suites: #207**, #307*A, #407*

** Barrier Free

** Affordable Unit



Layout should be used for reference only. Some details may not be exact. Floor plans may be a mirror image.

PROFESSIONALLY MANAGED BY:



ADAM NIESNER REALTY (1991) LTD.

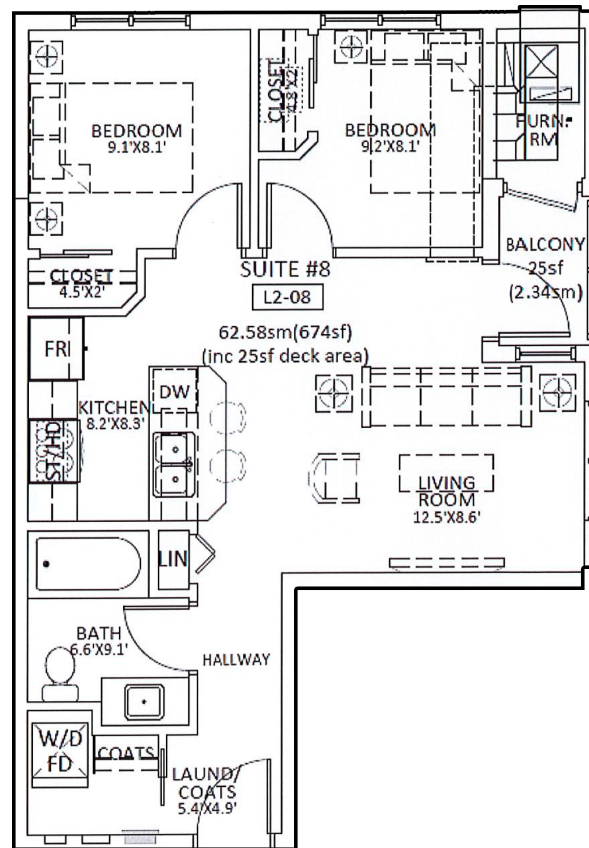
(306)569-1424

LEASING@COLLEGEMANORLIVING.CA

WWW.COLLEGEMANORLIVING.CA

2 BEDROOM + 1 BATH UNIT SIZE: 674 SQ. FT.

Northeast corner units - 2nd, 3rd & 4th floors
Suites: #208, #308, #408



Layout should be used for reference only. Some details may not be exact. Floor plans may be a mirror image.

PROFESSIONALLY MANAGED BY:



ADAM NIESNER REALTY (1991) LTD.

(306)569-1424

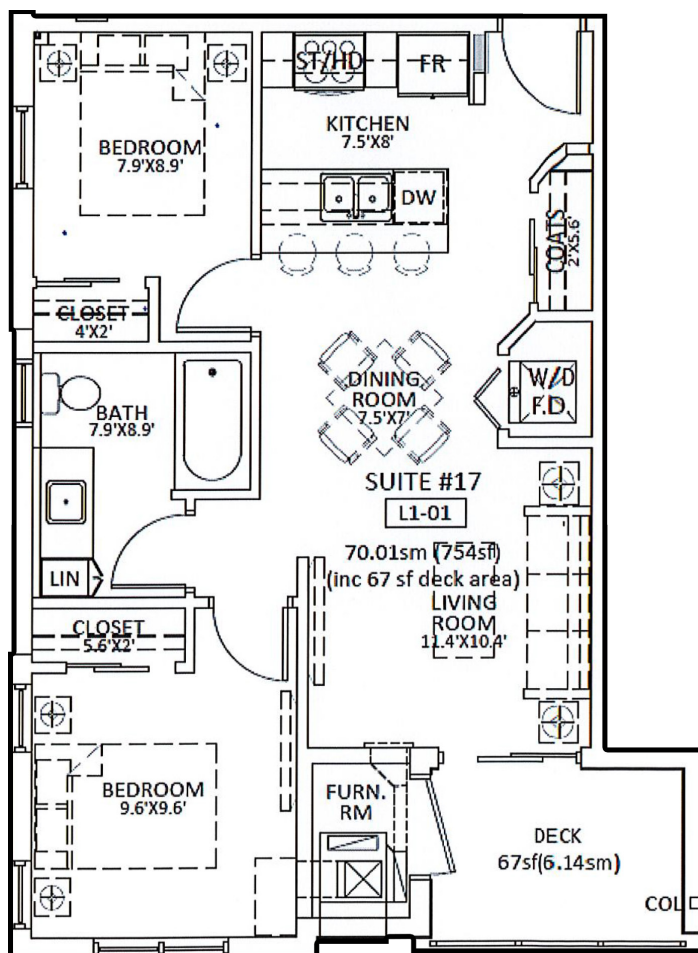
LEASING@COLLEGEMANORLIVING.CA

WWW.COLLEGEMANORLIVING.CA

2 BEDROOM + 1 BATH

UNIT SIZE: 754 SQ. FT.

Southwest corner unit - Main floor
Suite: #101



Layout should be used for reference only. Some details may not be exact. Floor plans may be a mirror image.

PROFESSIONALLY MANAGED BY:



ADAM NIESNER REALTY (1991) LTD.

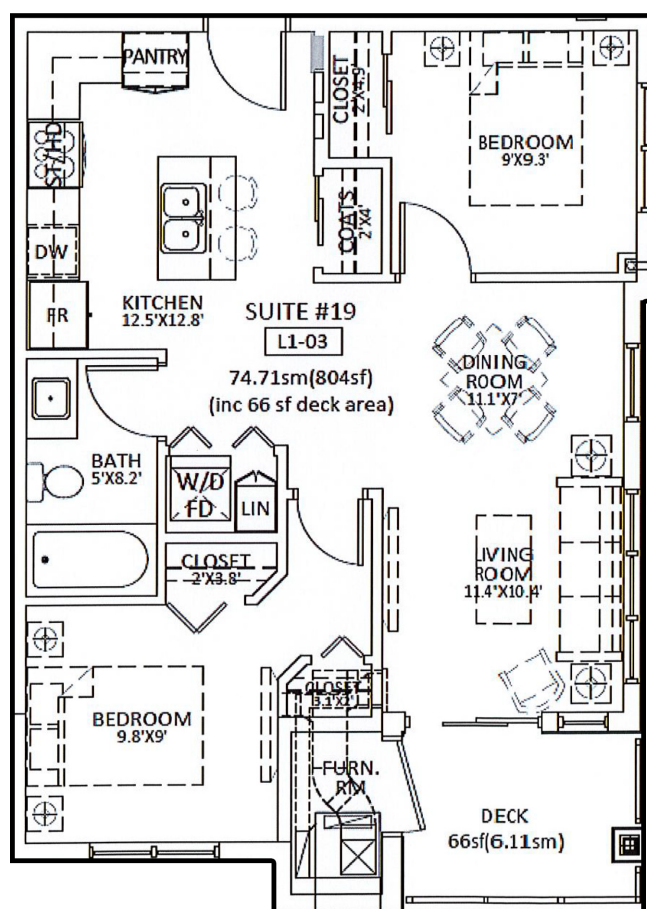
(306)569-1424

LEASING@COLLEGEMANORLIVING.CA
WWW.COLLEGEMANORLIVING.CA

2 BEDROOM + 1 BATH

UNIT SIZE: 804 SQ. FT.

Southeast corner unit - Main floor
Suite: #103



Layout should be used for reference only. Some details may not be exact. Floor plans may be a mirror image.

PROFESSIONALLY MANAGED BY:



ADAM NIESNER REALTY (1991) LTD.

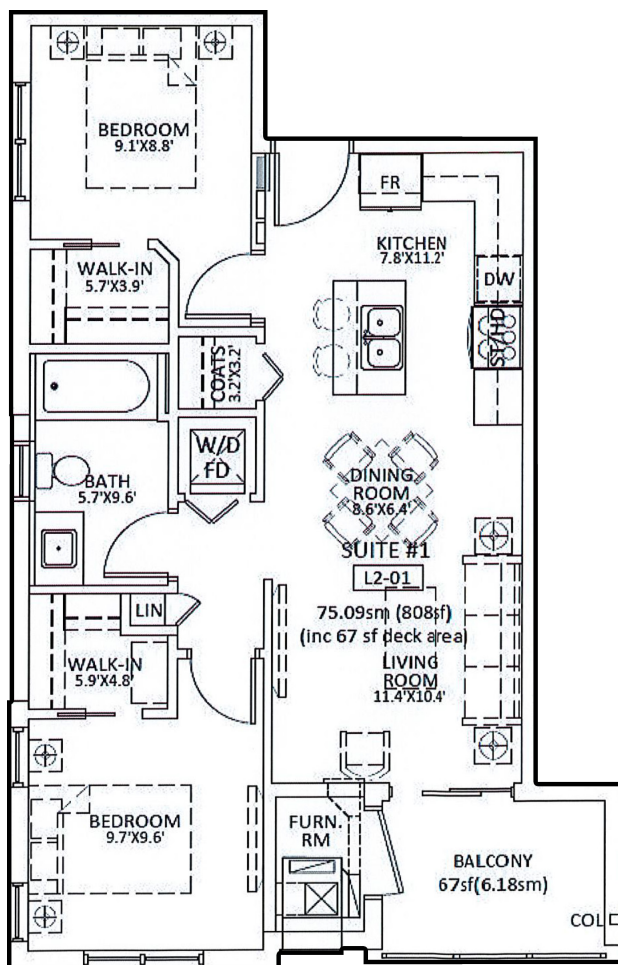
(306)569-1424

LEASING@COLLEGEMANORLIVING.CA
WWW.COLLEGEMANORLIVING.CA

2 BEDROOM + 1 BATH

UNIT SIZE: 808 SQ. FT.

Southwest corner units - 2nd, 3rd & 4th floors
Suites: #201, #301, #401



Layout should be used for reference only. Some details may not be exact. Floor plans may be a mirror image.

PROFESSIONALLY MANAGED BY:



ADAM NIESNER REALTY (1991) LTD.

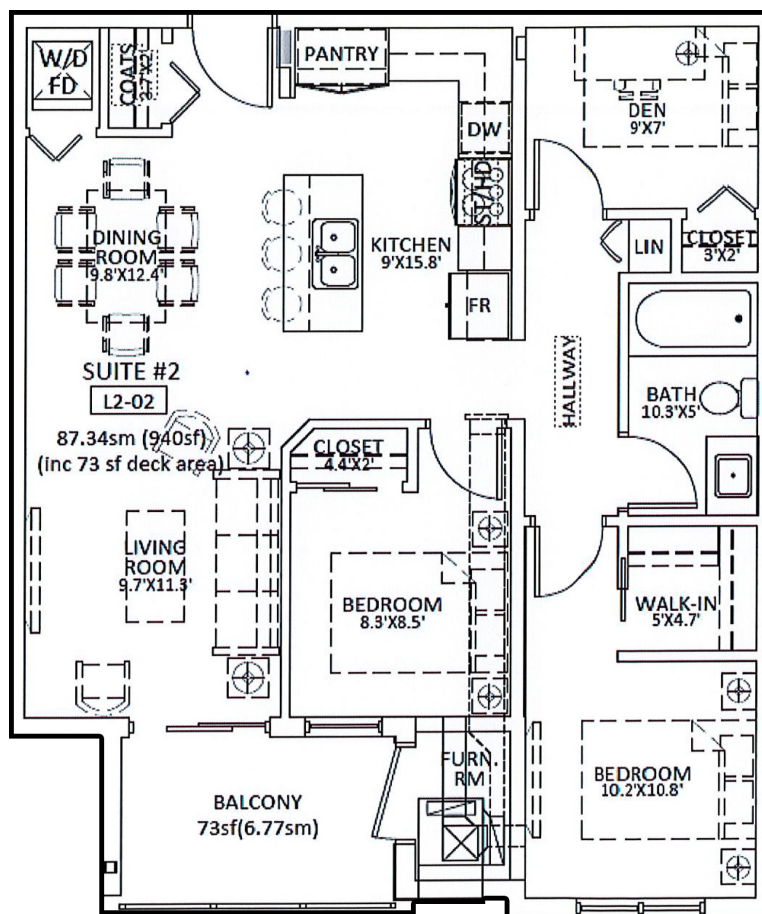
(306)569-1424

LEASING@COLLEGEMANORLIVING.CA
WWW.COLLEGEMANORLIVING.CA

WWW.COLLEGEMANORLIVING.CA

2 BEDROOM + DEN + 1 BATH UNIT SIZE: 940 SQ. FT.

South facing units - 2nd, 3rd & 4th floors
Suites: #202, #302, #402



Layout should be used for reference only. Some details may not be exact. Floor plans may be a mirror image.

PROFESSIONALLY MANAGED BY:



ADAM NIESNER REALTY (1991) LTD.

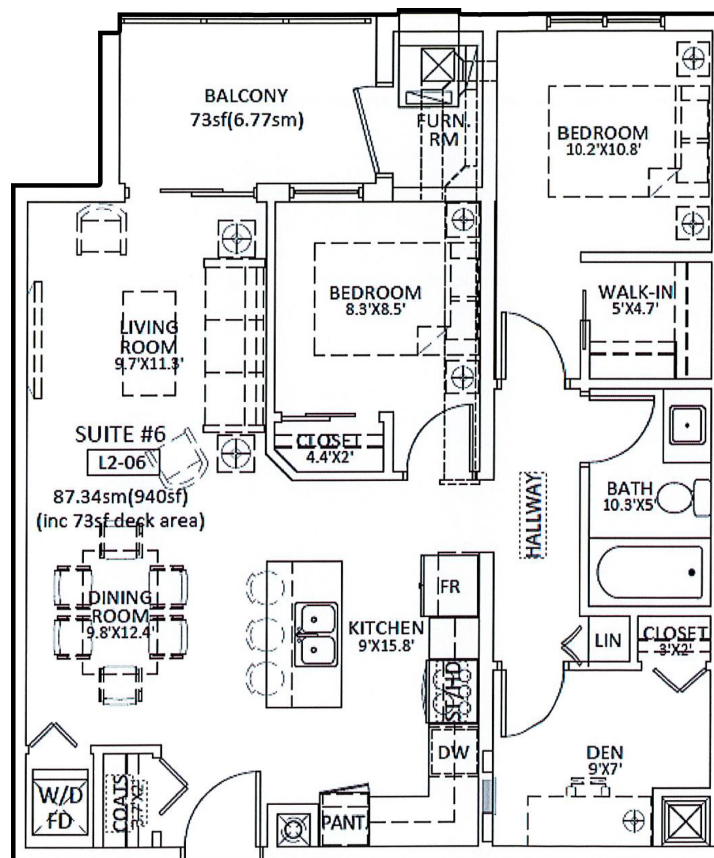
(306)569-1424

LEASING@COLLEGEMANORLIVING.CA

WWW.COLLEGEMANORLIVING.CA

2 BEDROOM + DEN + 1 BATH UNIT SIZE: 940 SQ. FT.

North facing units - 2nd, 3rd & 4th floors
Suites: #206, #306, #406



Layout should be used for reference only. Some details may not be exact. Floor plans may be a mirror image.

PROFESSIONALLY MANAGED BY:



ADAM NIESNER REALTY (1991) LTD.

(306)569-1424

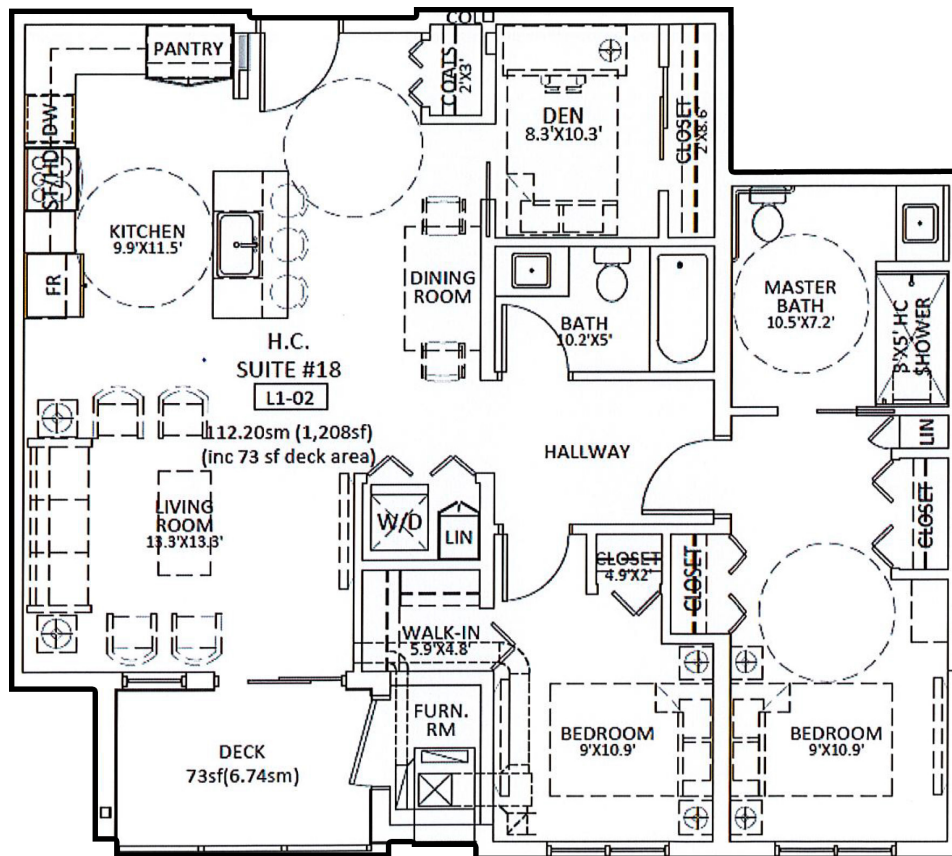
LEASING@COLLEGEMANORLIVING.CA

WWW.COLLEGEMANORLIVING.CA

2 BEDROOM + DEN + 2 BATH UNIT SIZE: 1,208 SQ. FT.

South center unit - Main floor
Suite: #102**

**Barrier Free



Layout should be used for reference only. Some details may not be exact. Floor plans may be a mirror image.

PROFESSIONALLY MANAGED BY:



ADAM NIESNER REALTY (1991) LTD.

(306)569-1424

LEASING@COLLEGEMANORLIVING.CA

WWW.COLLEGEMANORLIVING.CA